

**Cat Electronic Technician 2005A-01
Configuration**

1/16/2006 1:35 AM

C15 Truck (MXS04317)

Parameter	Value
Vehicle ID	1FUJA6AV35LU27945
Engine Serial Number	
ECM Serial Number	
Personality Module Part Number	
Personality Module Release Date	NOV04
Personality Module Code	22
ECM Date/Time	1/16/2006 1:49:15 PM

Description	Value	Unit	TT
C15 Truck (MXS04317)			
Selected Engine Rating			
ECM Identification Parameters			
Vehicle ID			1
Engine Serial Number			
ECM Serial Number			
Personality Module Part Number	2647701-00		
Personality Module Release Date	NOV04		
Security Access Parameters			
Total Tattletale	54		
Last Tool to change Customer Parameters	ETR01978		
Last Tool to change System Parameters	00000000		
ECM Wireless Communications Enable	No		0
Vehicle Speed Parameters			
Vehicle Speed Calibration	32420	PPM	1
Vehicle Speed Cal (J1939-Trans)	Unavailable	R/Mile	
Vehicle Speed Cal (J1939-ABS)	Unavailable	Ratio	
Vehicle Speed Limit	65	MPH	2
VSL Protection	1749	RPM	1

1:35:44 AM

1/16/2006

Tachometer Calibration	12.0	PPR	1
Soft Vehicle Speed Limit	No		1
Two Speed Axle - Low Speed Range Axle Ratio	Unavailable		
Nominal Axle Ratio - High Speed Range Axle Ratio	Unavailable		
Cruise Control Parameters			
Low Cruise Control Speed Set Limit	30	MPH	1
High Cruise Control Speed Set Limit	65	MPH	2
Engine Retarder Mode	Coast		1
Engine Retarder Minimum VSL Type	Hard Limit		0
Engine Retarder Minimum Vehicle Speed	0	MPH	1
Auto Retarder in Cruise (0 = Off)	0	MPH	1
Auto Retarder in Cruise Increment	0	MPH	1
Cruise/Idle/PTO Switch Configuration	Set/Decel-Res/Accel		1
SoftCruise Control	Yes		1
Adaptive Cruise Control Enable	Disabled		0
Idle Parameters (Old PTO)			
Idle Vehicle Speed Limit	1	MPH	1
Idle RPM Limit	2120	RPM	1
Idle/PTO RPM Ramp Rate	50	RPM/s	1
Idle/PTO Bump RPM	20	RPM	1
Dedicated PTO Parameters			
Engine/Gear Parameters			
Lower Gears Engine RPM Limit	2120	RPM	0
Lower Gears Turn Off Speed	3	MPH	0
Intermediate Gears Engine RPM Limit	2120	RPM	0
Intermediate Gears Turn Off Speed	5	MPH	0
Gear Down Protection RPM Limit	2320	RPM	0
Gear Down Protection Turn On Speed	60	MPH	1
Low Idle Engine RPM	700	RPM	1
Transmission Style	Manual Option 1		1
Eaton Top 2 Override with Cruise Switch	Unavailable		
Top Gear Ratio	0.740		1
Top Gear Minus One Ratio	1.000		1
Top Gear Minus Two Ratio	0.000		0
Governor Type	Full Range		1

Timer Parameters			
Smart Idle Parameters			
Engine Monitoring Parameters			
Engine Monitoring Mode	Shutdown		1
Engine Monitoring Lamps	Warning Lamp		0
Coolant Level Sensor	4-pin		1
Maintenance Parameters			
Trip Parameters			
Vehicle Activity Report Parameters			
Minimum Idle Time (0 = Off)	0	min	0
Driver Reward			
Input Selections			
Fan Override Switch	None		0
Transmission Neutral Switch	None		0
Ignore Brake/Clutch Switch	Unavailable		
Torque Limit Switch	Unavailable		
Diagnostic Enable Switch	None		0
PTO On/Off Switch	Unavailable		
Remote PTO Set Switch	Unavailable		
Remote PTO Resume Switch	Unavailable		
PTO Engine RPM Set Speed Input A	Unavailable		
PTO Engine RPM Set Speed Input B	Unavailable		
Starting Aid On/Off Switch	None		0
Two Speed Axle Switch	None		0
Cruise Control On/Off Switch	J1/P1:59		1
Cruise Control Set/Resume/Accel/Decel Switch	J1/P1:35 & 44		1
Cruise Control Pause Switch	None		0
Clutch Pedal Position Switch	J1/P1:22		1
Retarder Off/Low/Med/High Switch	J1/P1:23 & 40		0
Service Brake Pedal Position Switch #1	J1/P1:45		1
Accelerator Pedal Position	J1/P1:66		0
Vehicle Speed Input	J1/P1:32 & 33		1
Output Selections			
Passwords			
Data Link Parameters			

System Parameters			
--------------------------	--	--	--

**Cat Electronic Technician 2005A-01
Event Code**

1/16/2006 1:04 AM

C15 Truck (MXS04317)

Parameter	Value
Vehicle ID	
Engine Serial Number	
ECM Serial Number	
Personality Module Part Number	2647701-00
Personality Module Release Date	NOV04
Personality Module Code	22
ECM Date/Time	1/16/2006 1:17:39 PM

Code	Description	Occur	First	Last
C15 Truck (MXS04317) - Diagnostic Clock = 4426 hours				
111- 1	Low Coolant Level Warning (62)	1	4426	4426
71- 1	Idle Shutdown (47)	3	4293	4360

**Cat Electronic Technician Cat ET2003B
Current Totals**

1/30/2004 2:08 PM

3406E Truck (5EK96894)

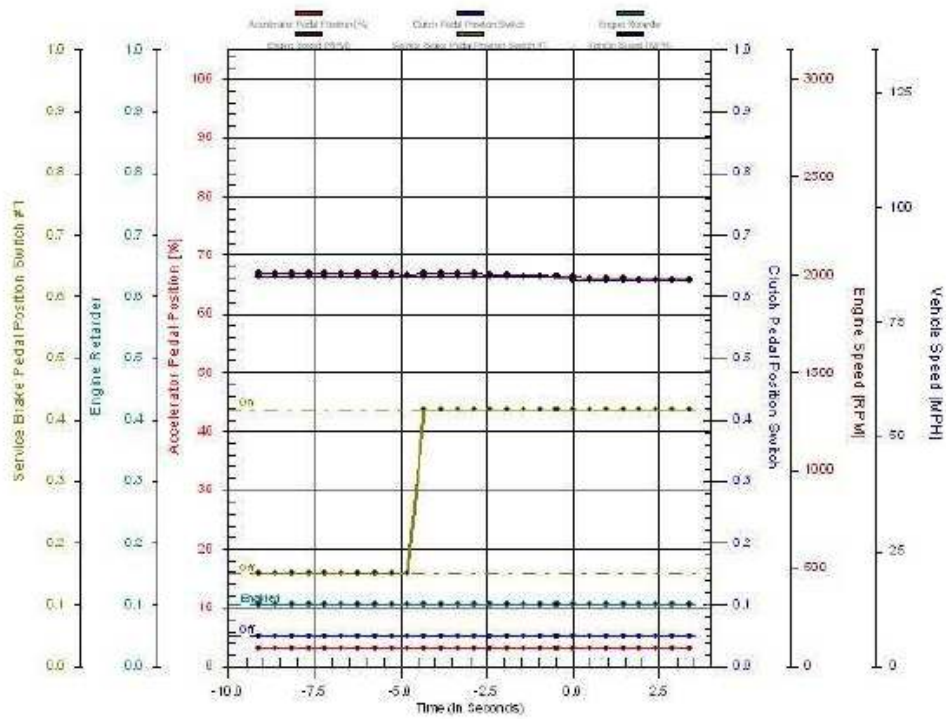
Parameter	Value
Vehicle ID	
Engine Serial Number	
ECM Serial Number	
Personality Module Part Number	1851223-00
Personality Module Release Date	DEC99
Personality Module Code	341
ECM Date/Time	1/30/2004 10:11:23 AM

Description	Value	Unit
Total Time	16166:54	hours
Total PTO Time	2:30	hours
Total Idle Time	5297:03	hours
Total Distance	584518	Miles
Total Fuel	117851	Gal
Total PTO Fuel	5	Gal
Total Idle Fuel	5394	Gal
Total Max Fuel	234835	Gal
Average Load Factor	49	%

Cat Electronic Technician 2005B v1.0
 15394:48:46 Diagnostic 84-10 Vehicle Speed signal rate of change (36) 4/6/2005 11:55:29 AM

9/26/2006 5:20 PM

Parameter	Value
ECM Serial Number	
Vehicle ID	
Personality Module Part Number	2208237-00
Personality Module Release Date	mar02
Engine Serial Number	
Personality Module Code	7
ECM Date/Time	11/7/2000 6:31:37 AM



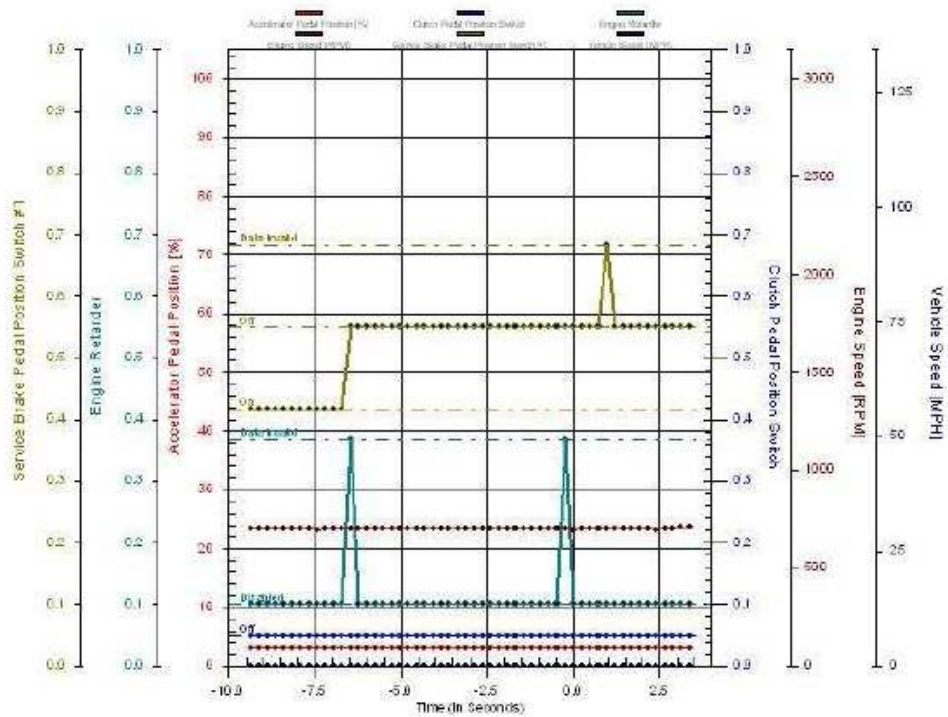
5:20:16 PM

9/26/2006

Cat Electronic Technician 2005B v1.0
 11391:22:10 External Trigger- External Switch 1/30/2004 3:05:18 PM

9/26/2006 5:37 PM

Parameter	Value
ECM Serial Number	
Vehicle ID	564746N
Personality Module Part Number	1779224-00
Personality Module Release Date	nov99
Engine Serial Number	
Personality Module Code	8
ECM Date/Time	4/18/2004 5:30:29 PM



5:37:58 PM

9/26/2006

**Cat Electronic Technician Cat ET2003B
Parameter Lockout**

1/30/2004 2:50 PM

3406E Truck (6TS03318)

Parameter	Value
Vehicle ID	
Engine Serial Number	
ECM Serial Number	
Personality Module Part Number	1572929-00
Personality Module Release Date	MAY98
Personality Module Code	41
ECM Date/Time	1/30/2004 10:18:38 AM

Description	Mode
A/C Switch Fan On-Time (0 = Off)	Unlocked
Engine Retarder Delay	Unlocked
High Cruise Control Speed Set Limit	Unlocked
Multi-Function Output #2	Unlocked
Multi-Function Output #3	Unlocked
Multi-Function Output #4	Unlocked
Soft Vehicle Speed Limit	Unlocked
Top Engine Limit	Unlocked
Top Gear Minus One Ratio	Unlocked
Top Gear Minus Two Ratio	Unlocked
Top Gear Ratio	Unlocked
Transmission Style	Unlocked
Vehicle Speed Calibration	Unlocked
Vehicle Speed Limit	Unlocked
VSL Protection	Unlocked

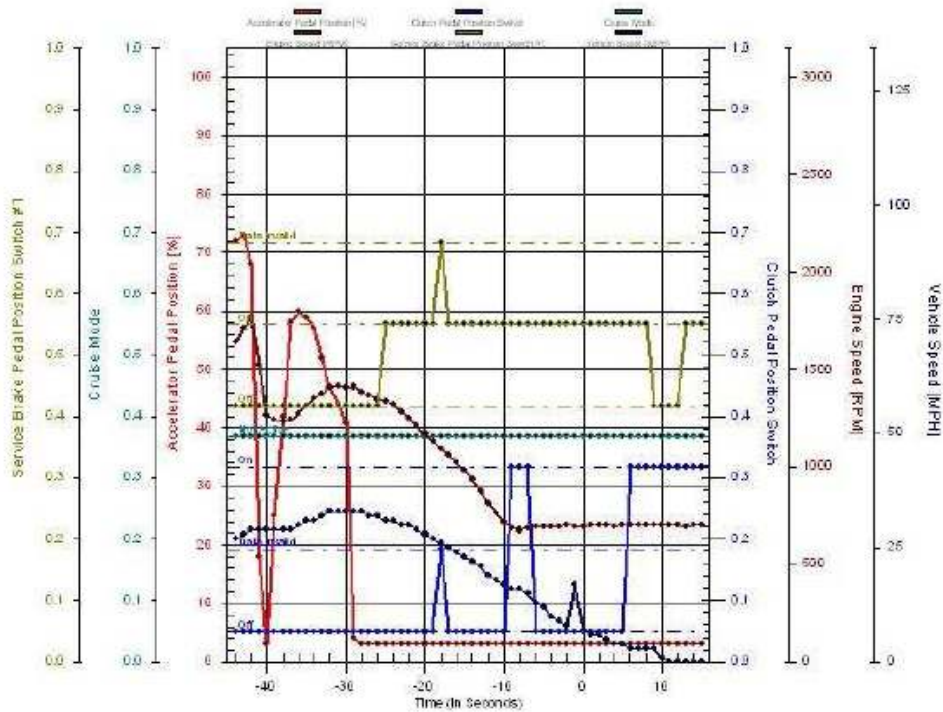
5:55:35 PM

9/26/2006

Cat Electronic Technician 2005B v1.0
 12207:46:36 Sudden Stop 32852-14 Unknown code. Check service manual. 4/17/2004 8:24:53 AM

9/26/2006 5:17 PM

Parameter	Value
ECM Serial Number	
Vehicle ID	
Personality Module Part Number	1779224-00
Personality Module Release Date	nov99
Engine Serial Number	
Personality Module Code	8
ECM Date/Time	4/18/2004 5:15:40 PM



5:17:46 PM

9/26/2006

**Cat Electronic Technician Cat ET2003B
Trip Segment - Driver**

1/30/2004 2:37 PM

3406E Truck (6TS03318)

Parameter	Value
Vehicle ID	
Engine Serial Number	
ECM Serial Number	
Personality Module Part Number	1572929-00
Personality Module Release Date	MAY98
Personality Module Code	41
ECM Date/Time	1/30/2004 10:05:42 AM

Description	Value	Unit
Time	21379:00	hours
Driving Time	17037:50	hours
Distance	811942.0	Miles
Fuel	161299.4	Gal
Overall Fuel Economy	5.03	MPG
Driving Fuel Economy	5.14	MPG
Idle Time	4340:17	hours
Idle Fuel	3262.1	Gal
% Idle Time	20	%
PTO Time	0:51	hours
PTO Fuel	15.3	Gal
% PTO Time	0	%
Avg Load Factor	42	%
Avg Vehicle Speed	38.0	MPH
Avg Driving Speed	47.7	MPH
Max Vehicle Speed	89	MPH
Max Engine Speed	2327	RPM
Start Time	0:00	hours
End Time	21379:00	hours

Start Odometer	0.0	Miles
End Odometer	811942.0	Miles

**Cat Electronic Technician Cat ET2003B
Logged Diagnostic Codes**

1/30/2004 2:25 PM

3406E Truck (6TS03318)

Parameter	Value
Vehicle ID	
Engine Serial Number	
ECM Serial Number	
Personality Module Part Number	1572929-00
Personality Module Release Date	MAY98
Personality Module Code	41
ECM Date/Time	1/30/2004 9:53:36 AM

Code	Description	Occur	First	Last
3406E Truck (6TS03318) - Diagnostic Clock = 21379 hours				
110- 0	High Coolant Temperature Warning (61)	4	20161	20166
110-11	Very High Coolant Temperature (61)	1	20166	20166

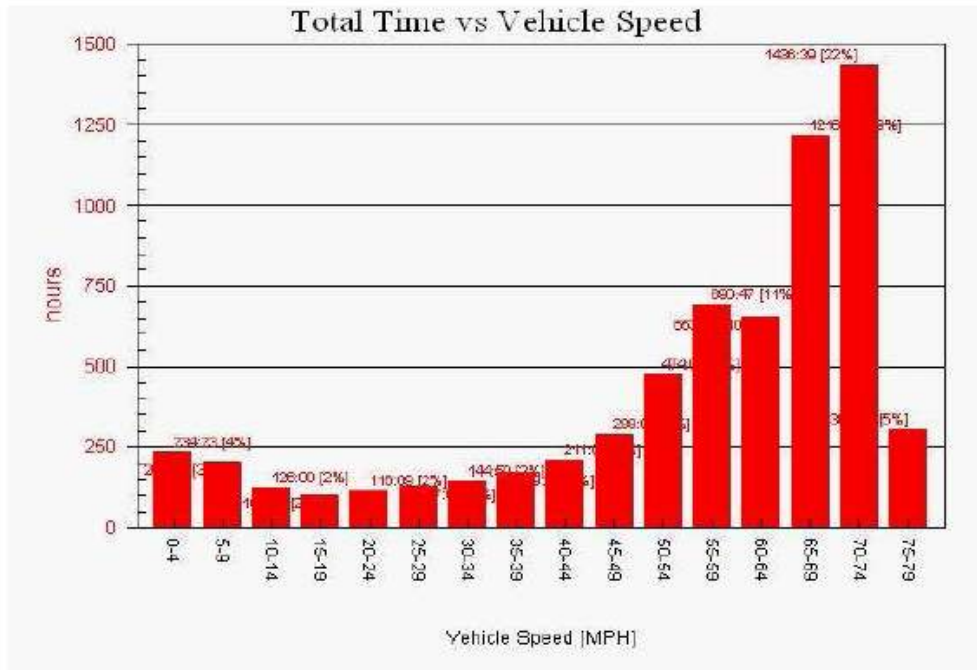
**Cat Electronic Technician Cat ET2003B
Total Time vs Vehicle Speed**

4/18/2004 6:30 PM

C-16 Truck (7CZ01906)

Parameter	Value
Vehicle ID	
Engine Serial Number	
ECM Serial Number	
Personality Module Part Number	1779224-00
Personality Module Release Date	nov99
Personality Module Code	8
ECM Date/Time	4/18/2004 5:23:07 PM

Vehicle Speed(MPH)	hours	%
0-4	234.40	3.61
5-9	204.15	3.14
10-14	126.00	1.94
15-19	100.40	1.55
20-24	116.15	1.79
25-29	127.10	1.96
30-34	144.85	2.23
35-39	169.45	2.61
40-44	211.10	3.25
45-49	289.10	4.45
50-54	474.00	7.29
55-59	690.80	10.63
60-64	653.00	10.05
65-69	1216.55	18.72
70-74	1436.65	22.11
75-79	304.50	4.69



**Cat Electronic Technician Cat ET2003B
Critical Events**

4/18/2004 6:53 PM

C-16 Truck (7CZ01906)

Parameter	Value
Vehicle ID	
Engine Serial Number	
ECM Serial Number	
Personality Module Part Number	1779224-00
Personality Module Release Date	nov99
Personality Module Code	8
ECM Date/Time	4/18/2004 5:45:30 PM

	Start Time	Elapsed	Extreme	Average
C-16 Truck (7CZ01906)				
84-14 Quick Stop Occurrence	8/26/2002 6:50:05 AM	00:00:01	27 MPH/S	27 MPH/S